

Otto Bock®

QUALITY FOR LIFE



Omo Immobil

Product Information





Unique functional diversity

The Omo Immobil shoulder joint orthosis features outstanding functionality for post-operative and post-traumatic shoulder fittings. Due to its many adjustment options, immobilization of the shoulder joint with the Omo Immobil orthosis can be individually adapted to patient requirements.

Omo Immobil

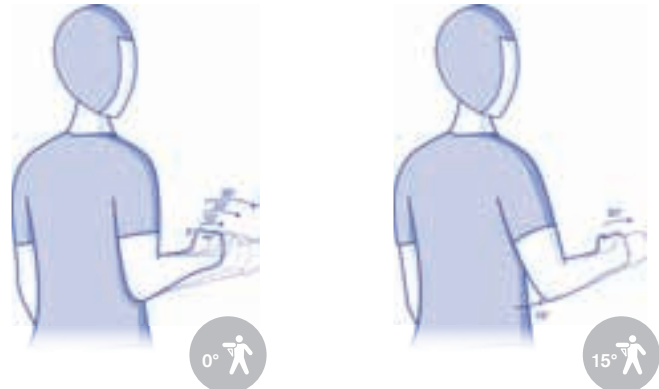


Advantages at a glance

- Individually adjustable thanks to unique functional diversity
- 50A10 Omo Immobil: One version for left and right shoulder
- Breathable, washable pad for a high level of wearer comfort
- Easy to use
- Adaptation without tools thanks to functional elements that attach with hook and loop patches
- Attractive, slim design

Indications

The Omo Immobil shoulder joint orthosis is used after surgery and in case of shoulder injuries. Key therapy goals include anatomically correct and secure positioning of the shoulder, relief of the shoulder joint and pain reduction.



50A10 Omo Immobil

Post-operative and post-traumatic conditions of the shoulder and arm region that require abduction positioning of the arm, e.g. after:

- Rotator cuff surgery
- Reduction of posterior shoulder dislocation
- Subcapital fractures of the humerus
- Shoulder impingement syndrome
- Shoulder replacement surgery
- Operative shoulder stabilization



50A11 Omo Immobil Rotation

All indications that require immobilization of the shoulder joint at 10°, 20° or 30° of external rotation or in a combined abduction and external rotation position, e.g.:

- Condition after anterior shoulder dislocation
- Bankart lesion (conservative treatment and post-operative immobilization)



Effects



The 50A10 Omo Immobil orthosis allows for functional positioning of the shoulder through abduction at 0°, 15°, 30°, 60° or 90°. In this way, it effectively relieves the shoulder joint and directly supports the rehabilitation process.

The 50A11 Omo Immobil Rotation orthosis also allows for immobilization with an external rotation of 10°, 20° or 30°. Any combination of abduction and external rotation angle can be used.

What does external rotation mean?

External rotation describes the rotational movement of the upper arm outwards around its own longitudinal axis so that the hand moves away from the body.

What advantages does external rotation offer?

The latest scientific and clinical findings have shown that after anterior shoulder dislocation and Bankart lesion, positioning the shoulder with external rotation instead of internal rotation provides clear advantages. With external rotation positioning, the risk of repeated dislocation after first-time anterior shoulder dislocation can be reduced by 38.2%. With patients younger than 30 years, the success rate is even higher (46.0%).* For more information, please refer to the study review 646D353=GB.

* Itoi E, Hatakeyama Y, Sato T, Kido T, Minagawa H, Yamamoto N, Wakabayashi I, Nozaka K: Immobilization in external rotation after shoulder dislocation reduces the risk of recurrence. J Bone Joint Surg Am 2007, 89: 2124-31

Features and Benefits

Hook and loop abduction wedge for quick, easy adjustment

The Omo Immobil orthosis offers a number of abduction angles, thereby supporting optimum positioning of the arm with each individual fitting. The angles can be set quickly and easily using the abduction wedges, which are attached with hook and loop patches.



Optional elements for setting external rotation

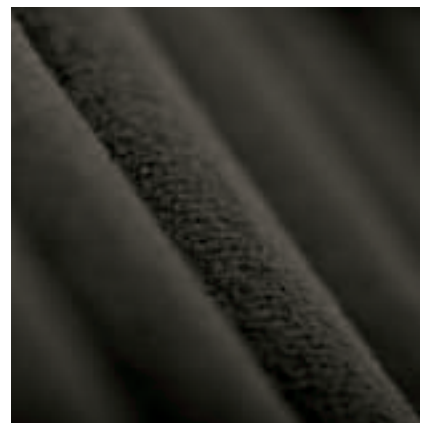
In addition to functional positioning of the shoulder through abduction, the 50A11 Omo Immobil Rotation orthosis also allows for positioning of the shoulder with external rotation. Any combination of abduction and external rotation angle can be used. The individual angles that are required can be quickly and easily set to 10°, 20° or 30° using the different elements.

The 29A222 External Rotation Set can be added to the 50A10 Omo Immobil orthosis at any time.



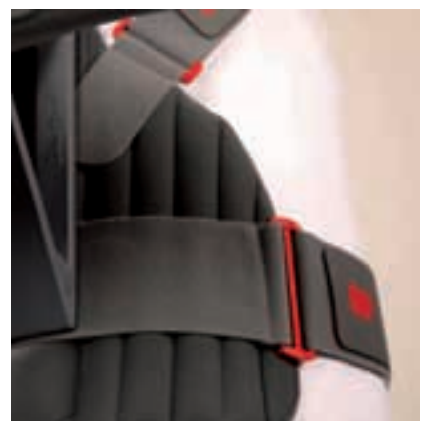
Breathable, washable pad

The breathable, washable pad is made of a very soft and skin-friendly material, making the orthosis comfortable to wear. At the same time, it prevents pressure points and skin irritations.



Positionable shoulder strap and waist belt

The shoulder strap and waist belt are attached to the torso component of the orthosis with hook and loop elements. They can be individually positioned without tools and therefore provide for an optimum fit of the orthosis.





Stable tube frame

Despite the low weight, the functional tube frame gives the orthosis stability and allows for comfortable and secure positioning of the arm.



Hand pad, attaches with hook and loop patch

The hand pad, which attaches with a hook and loop patch, ensures comfortable positioning of the hand and can be individually positioned depending on the forearm length.



Easy to use

Functional hook and loop closures at the strap ends as well as return loops on the shoulder strap and waist belt provide for easy application and removal of the orthosis. For easy and comfortable handling, the straps can be individually shortened so that the closures are situated ventrally.



Adjusting the Orthosis



Setting the body side

Upon delivery, the orthosis is preset for use on the right arm. Fold over the arm rest (1) to adjust it to the left side of the body.

- Remove the waist belt and hand pad and reattach them laterally reversed on the opposite side of the torso component (2).
- Remove the arm straps and undo the shoulder strap closure.
- Turn the shoulder pad on the strap so that the seam is away from the body.



Setting the abduction angle

The desired abduction angle can be set with the abduction wedges that attach to the orthosis with hook and loop patches.

- Unfold the orthosis and position the wedge at the upper pivot point of the joint on the arm rest (1).
- Fold back the arm rest to fix the wedge (2).
- If 0° abduction is desired, attach the double-sided hook strip at the position described above.



Setting external rotation on the 50A11 Omo Immobil Rotation

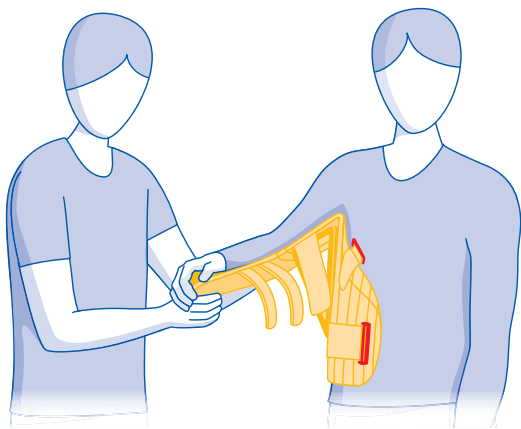
The setting is established by attaching the external rotation elements (29A222) in the 10°, 20° or 30° external rotation position.

- To do so, remove the hook and loop closure on the arm rest so that the forearm pad can be pulled off the tube frame (1).
- Remove the locking pins, then pull off the forearm element and replace it with the desired external rotation element (2).
- Fasten the tube frame using the locking pins and cover it with the forearm pad.
- Reconnect the forearm and upper arm pads with the hook and loop closure.

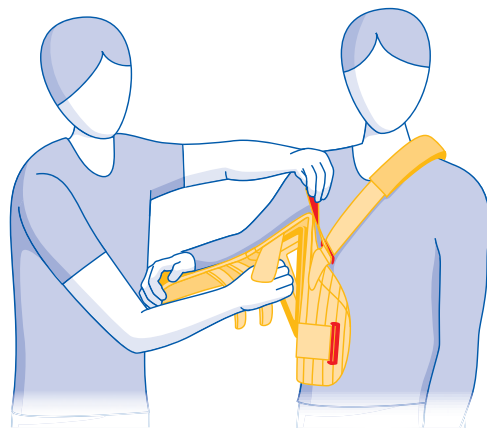
Applying the Orthosis

The Omo Immobil orthosis should be applied and removed by two people in order to keep the patient's arm carefully and safely in place.

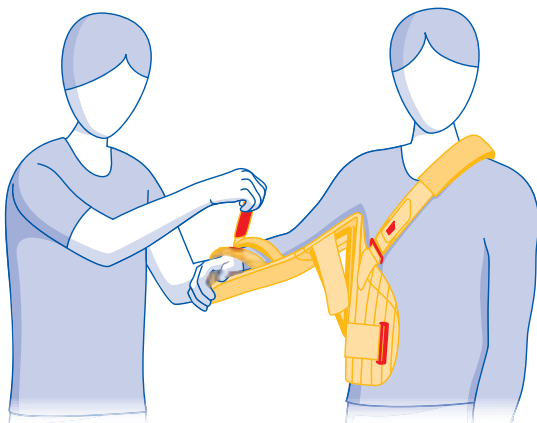
- 1** Carefully position the orthosis under the arm and pull it up on the torso.



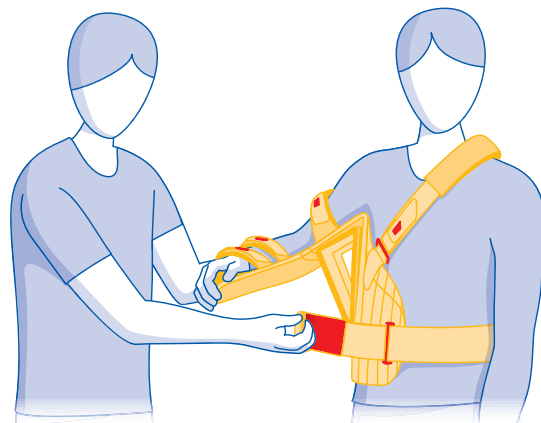
- 2** Place the shoulder strap diagonally over the sound side, guide it through the return loop on the torso component and fasten the hook and loop closure.



- 3** Secure the arm by closing the forearm straps and upper arm strap.



- 4** Guide the waist belt through the return loop and close it.

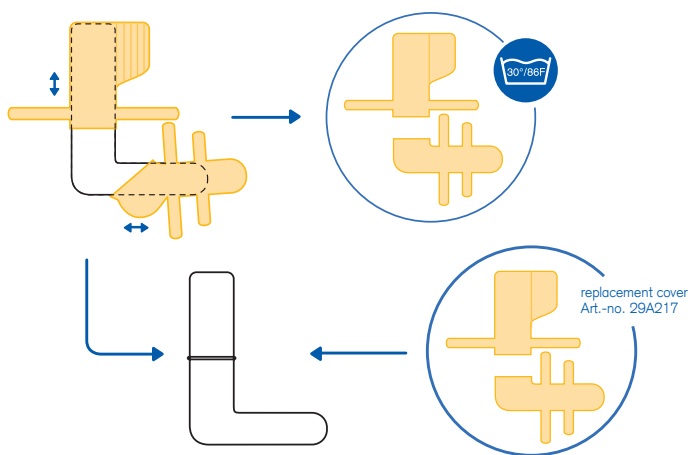


The proper fit of the orthosis must be verified after the initial application. Make sure that the orthosis does not cut into the underarm region and that the humerus head is not pushed upward. The optimal effect can only be attained when the orthosis is always firmly attached to the body.

Care Instructions

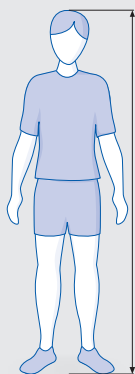
The fabric cover and straps/belt can be washed at 30°C using a standard mild detergent. For this purpose, the functional elements attached with hook and loop patches and the supporting tube frame must first be removed. Afterwards, the fabric cover can be dried in the dryer at a low temperature setting (delicate cycle).

If necessary, a replacement cover can be ordered (article number 29A217). We recommend using the replacement cover while the fabric cover is being cleaned.



Sizing Chart

The size of the orthosis is selected according to body height.



Art.-no.	Side	Size		Body height	
				cm	inch
50A10=		S	approx.	150 – 165	58.8 – 64.5
50A10=		M	approx.	165 – 175	64.5 – 68.5
50A10=		L	from approx.	175	68.5
50A11=	L / R	-S	approx.	150 – 165	58.8 – 64.5
50A11=	L / R	-M	approx.	165 – 175	64.5 – 68.5
50A11=	L / R	-L	from approx.	175	68.5





Technical changes reserved.

Otto Bock[®]

QUALITY FOR LIFE

Otto Bock HealthCare GmbH

Max-Näder-Straße 15 · 37115 Duderstadt/Germany · Phone +49 5527 848-1424 · Fax +49 5527 72330 · export@ottobock.de · www.ottobock.com

© Otto Bock · 646D354-CB - 08.08

