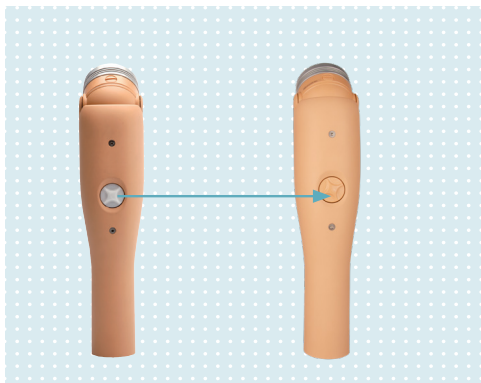
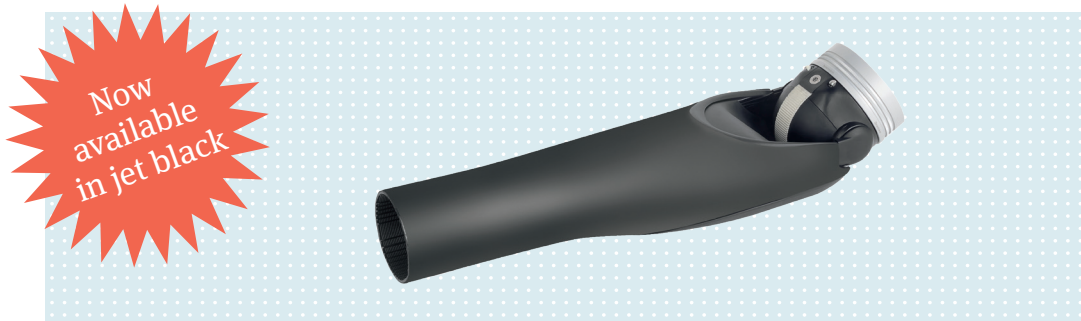


# ErgoArm Family Selection Guide

Lightweight and versatile

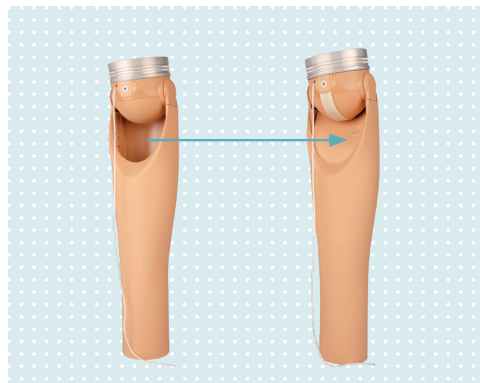
	ErgoArm 12K41	ErgoArm plus 12K42	ErgoArm Hybrid plus 12K44	ErgoArm Electronic plus 12K50
Jet Black/Color 7	not available	12K42=45-7 12K42=50-7	12K44=45-7 12K44=50-7	12K50=45-7 12K50=50-7
Color 4	12K41=45 12K41=50	12K42=45 12K42=50	12K44=45 12K44=50	12K50=45 12K50=50
Color 11	12K41=50-1	12K42=50-1	12K44=50-1	12K50=50-1
Color 15	12K41=50-2	12K42=50-2	12K44=50-2	12K50=50-2
Passive	●	●		
Body-Powered	●	●		
Myoelectric			●	●
Infinite Position Lock	●	●	●	●
Slip-stop function*	●	●	●	●
Automatic Forearm Balance		●	●	●
Easy Plug			●	●
Electronic Lock				●

\*ErgoArm Electronic Plus: Electronic vs. mechanical slip-stop function.



### 1 AFB Finger Wheel

For improved cosmesis, the AFB finger wheel is now the same color as the forearm shell.



### 2 Membrane Cover

The new membrane cover in the crook of the arm protects the internal components and prevents users' clothing from being trapped, while providing a sleek, seamless appearance to the finished prosthesis.



### 3 New color options

Colors 11 and 15 are now only available in the 50 mm diameter option.